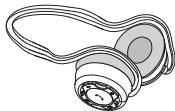
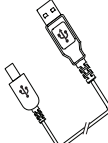




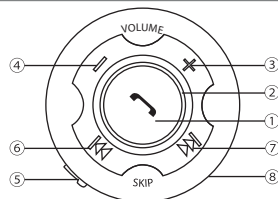
- DE** Bedienungsanleitung: www.arctic.ac/fileadmin/p311/manual_en.pdf
CZ Návod pro uživatele: www.arctic.ac/fileadmin/p311/manual_cz.pdf
FR Manuel de l'utilisateur: www.arctic.ac/fileadmin/p311/manual_fr.pdf
HU Használati útmutató: www.arctic.ac/fileadmin/p311/manual_hu.pdf
ES Manual del usuario: www.arctic.ac/fileadmin/p311/manual_es.pdf
PL Instrukcja obsługi: www.arctic.ac/fileadmin/p311/manual_pl.pdf
PT Manual do Utilizador: www.arctic.ac/fileadmin/p311/manual_pt.pdf
NL Gebruikershandleiding: www.arctic.ac/fileadmin/p311/manual_nl.pdf
SE Användarmanual: www.arctic.ac/fileadmin/p311/manual_se.pdf

Package contents

P311	USB charging cable	Protective case	User manual
			

Function diagram

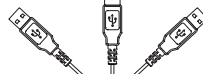
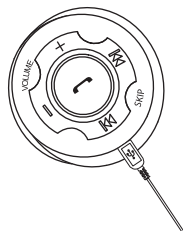
- ① Multifunction button
- ② LED indicator
- ③ Volume +
- ④ Volume -
- ⑤ Mini USB charging port
- ⑥ Backward
- ⑦ Forward
- ⑧ Microphone



Getting started

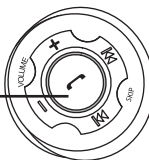
1. Charge the battery

Please make sure the battery has been fully charged and fully discharged at the first three times of use to ensure the best performance of the battery. A normal charging process takes about 2 - 3 hours.



2. Pair and connect the headset

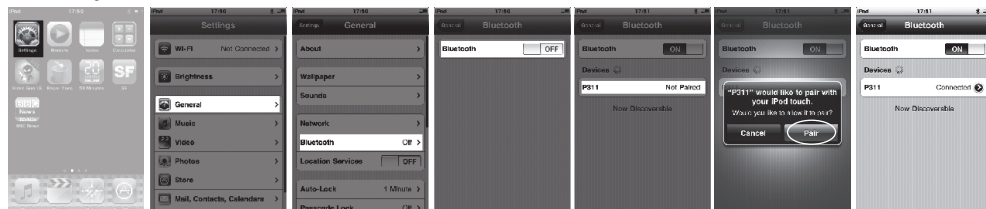
Hold for 7 seconds until the red and blue LED flash alternately



3. Turn on Bluetooth® on your phone and pair with headset

Example: iPad / iPhone / iPod Touch

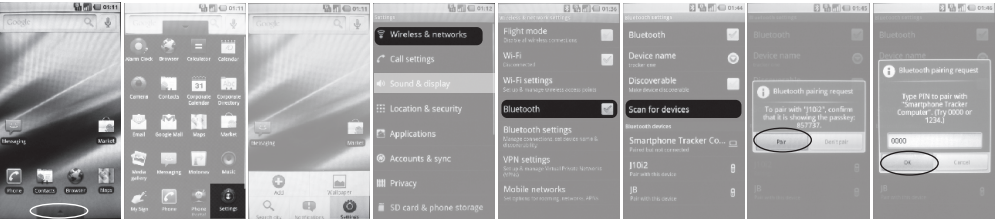
Press Settings > General > Bluetooth > Bluetooth on > P311 > Pair




Example: Nokia N97 mini
Press Menu > Settings > Connectivity > Bluetooth > Bluetooth on > Paired devices > Options > New paired device > P311 > Passcode "0000"

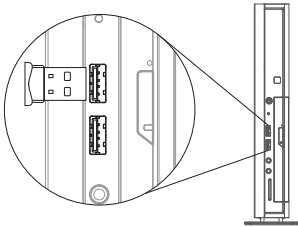



Example: Motorola Milestone
Press Menu > Settings > Wireless & networks > Bluetooth settings > Bluetooth on > Scan for devices > P311 > Passkey "0000"

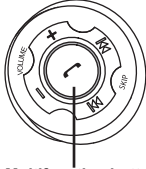


Use P311 with Skype (Windows 7)

1. Connect the **UD1 / UD2 USB Bluetooth® Dongle** (available at www.arctic.ac) to an available USB port of your computer after the installation of Bluetooth application.
2. Click on the  located in the system tray and select **"Turn on Bluetooth"** from the pop-up menu.

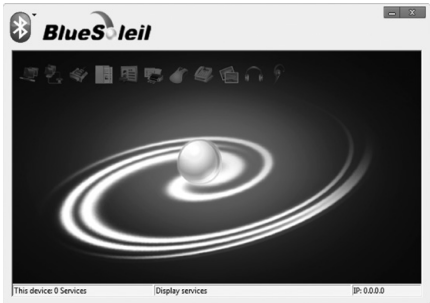


3. To start the IVT BlueSoleil software, click the  icon located in the system tray, select **"Display Classic View"** from the pop-up menu.
4. To activate the pairing mode on your P311, hold the **multifunction button** for 7 seconds until the red and blue LED flash alternately.

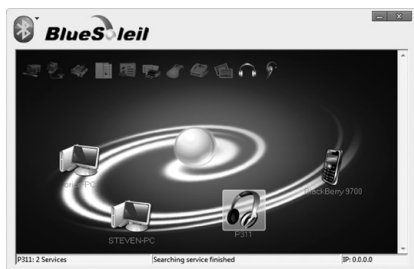



Multifunction button

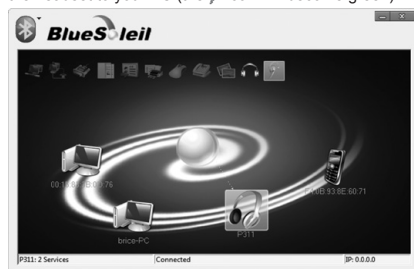
5. Double click on the orange ball to start or stop searching for Bluetooth devices in range.
6. Right click on the P311 icon and select **Pair**.



7. Double click on the P311 icon to search Bluetooth services.



8. Double click on the **Bluetooth Headset and Microphone** service icon to initiate the connection. The application will connect the headset to your PC (the  icon will become green).



9. Go to **Control Panel > Hardware and Sound > Sound**, and set **Bluetooth SCO Audio** as Default Playback and Recording Device.



10. Sign in to Skype and in the Tools menu, select Options...



11. Under Audio settings, select your Bluetooth device from Microphone, Speakers and Ringing dropdown lists.



12. Test your Skype audio settings are correctly configured by calling the Echo / Sound Test Service (Skype name:echo123)



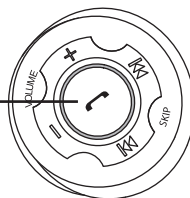
Switch the headset on or off

Switch on

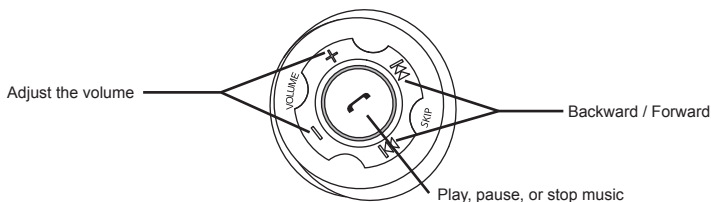
Hold for 3 seconds until the blue LED switches on

Switch off

Hold for 3 seconds until the red LED switches on





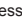


Music controls



Note: iPhone 4, iPhone 3GS, iPhone 3G, iPad, iPod touch (2nd generation), and iPod touch (4th generation) support pause, play, stop, next track and previous track for AVRCP when running the latest version of the device software.

Make and receive calls

Function	Action
Make a call:	Dial from your mobile phone's keypad and press "Send" or "OK".
Voice dialing:	1) In handsfree state, enable voice recognition function of your mobile phone. 2) Double press the multifunction button until you hear a beep prompt. 3) Say the name of the person you wish to call loudly.
Answer a call:	Press  once.
End a call:	Press  once.
Refuse a call:	Press and hold  for 2 seconds.
Redial the last dialed number:	Press and hold  for 2 seconds.
Switch the call between mobile phone and headset:	In call state, press and hold  for 2 seconds.

LED indicators

Status	Indication
Charging	Red LED on
Battery full	Red LED off
On	Blue LED flashes once every 7 seconds
Pairing mode	Red and blue LED will flash alternately
Low battery	Red LED flashes every 30 seconds / acoustic signal

Precautions

- 1) Avoid extreme volume. Long term exposure to loud music may cause hearing damage.
- 2) The radio waves emitted by the headset and wireless transmitter can affect the operation of nearby electronics including medical devices.
- 3) Keep the unit in a cool, dry place.

Warranty

This ARCTIC product includes a 2-year limited warranty. For further information, please consult warranty.arctic.ac

Arctic Sound P311 User Manual